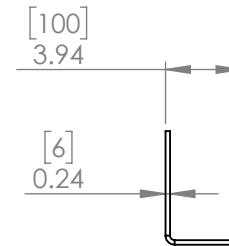
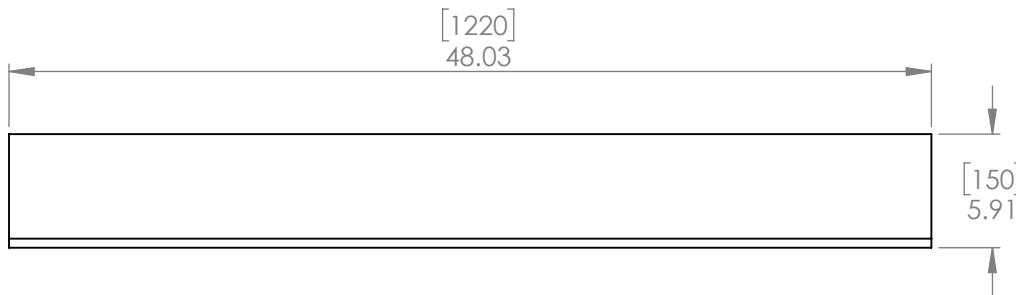
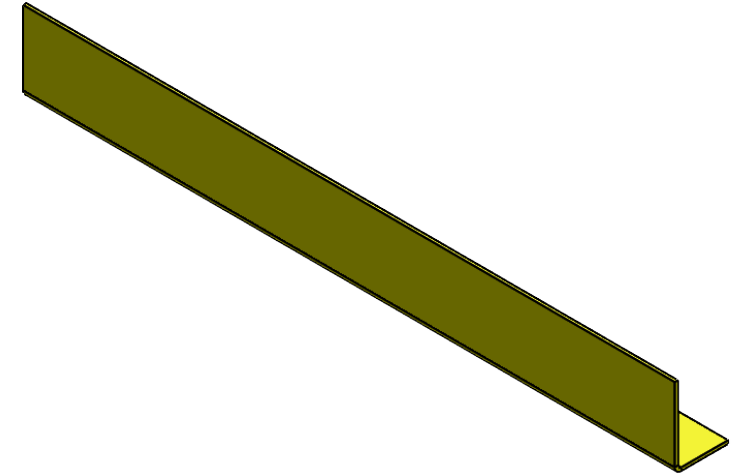
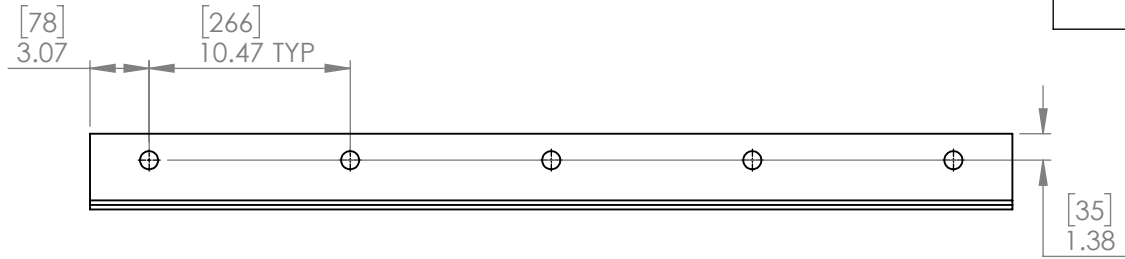


RP-48EX-MD - 48" Standard Duty Extender

REVISIONS				
ZONE	REV.	DESCRIPTION	DATE	APPROVED
	B	Redrawn for clarity and changed description.	12/19/2018	EGS
	C	Angle dimensions changed	4/28/2022	CTL



UNLESS OTHERWISE SPECIFIED:

DIMENSIONS ARE IN INCHES
[DIMENSIONS] ARE IN MM

TOLERANCES:
.X ± .12" [3 mm]
.XX ± .06" [1.5 mm]
.XXX ± .03" [0.7 mm]
Angular ± 1°

INTERPRET GEOMETRIC
TOLERANCING PER:

MATERIAL
Mild Steel

FINISH
Yellow Powder Coat

DRAWN
CHECKED
ENG APPR.
MFG APPR.
Q.A.
COMMENTS:

NAME DATE
EGS 12/19/2018



TITLE:
**48" Standard
Duty Extender**

SIZE A	DWG. NO. RP-48EX-MD	REV C
------------------	-------------------------------	-----------------

SCALE: NTS WEIGHT: 30.2 LBS SHEET 1 OF 1

quotes@rhinorails.com | specs.rhinorails.com | 866-874-3385

