



# RHINO RAILS

## SPACE SAVING RACK PROTECTORS

Rhino Rails® Space Saving Rack Protectors guard uprights from powered and non-powered equipment traffic in your warehouse.

Our special design allows for you to install the guard very close to the uprights, saving vital floor space while not compromising the protection value.

## Features & Benefits

- Special notched design saves vital space
- Heavy duty 3/8" steel construction
- Especially useful in narrow aisle situations and tunnels
- Steel floor angles attach securely to floor with 4 or 5 wedge anchors (sold separately)
- Powder coated Rhino Rails yellow for high visibility
- Narrow formed guard keeps the first pallet bay clear
- Anchor point in the nose increases holding power right at the rack upright

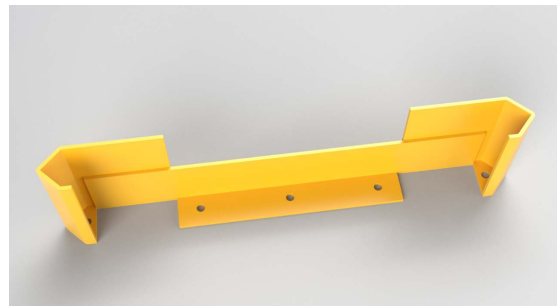
## Specifications

Item Numbers:

- IRP-42LH-HD • IRP-42RH-HD • IRP-42-HD
- IRP-48LH-HD • IRP-48RH-HD • IRP-48-HD
- Material Thickness: 3/8" (heavy-duty)
- Standard Height: 12" tall ends; 6" x 4" floor angle
- Anchor Size: 3/4" x 4.25" wedge anchor

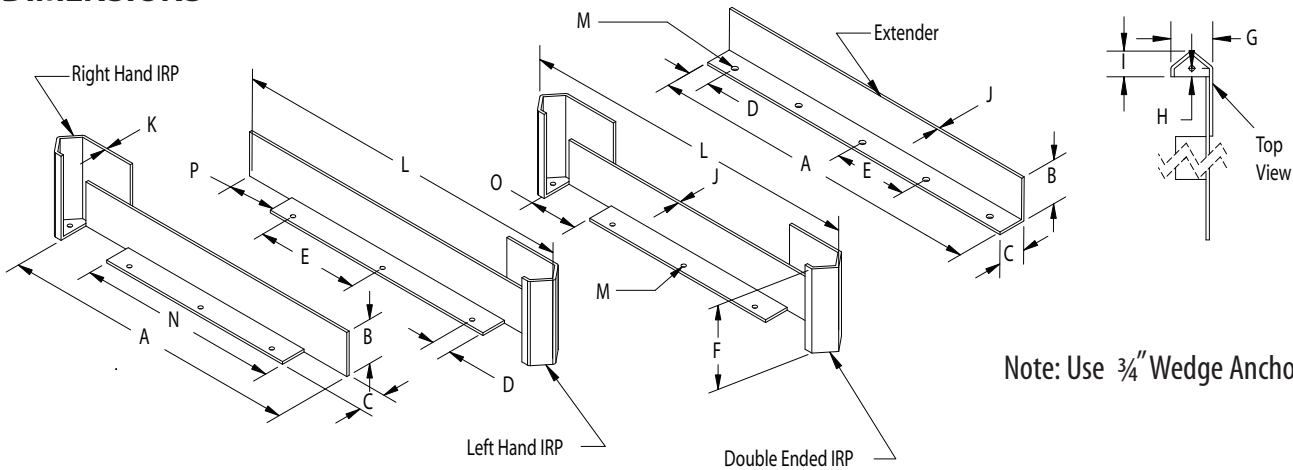


**Right Hand Rack Protector**





## SPACE-SAVING RACK PROTECTOR DIMENSIONS



Note: Use 3/4" Wedge Anchors for installation

Dimensions (Inches)

Part	A	B	C	D	E	F	G	H	I	J	K	L	M	N	O	P	Number of Holes	Curve Location
	Outer Length of Extension	Height of Leg	Width of Leg	End to Hole	Hole to Hole	Height of Curve	Width of Curve	Curve Hole to End	Length of Curve	Extension Thickness	Curve Thickness	Outside Overall Length	Hole Diameter	Inner Length of Extension	Gap Length Single	Gap Length Double		
IRP-42-HD	43	6.5	4	2.8	11.7	12	5	1	3	0.4	0.4	49	0.94	25	9	N/A	5	Both Sides
IRP-42LH-HD	43	6.5	4	2.8	11.7	12	5	1	3	0.4	0.4	46	0.94	25	N/A	9	4	Left
IRP-42RH-HD	43	6.5	4	2.8	11.7	12	5	1	3	0.4	0.4	46	0.94	25	N/A	9	4	Right
IRP-48-HD	49	6.5	4	2.8	14.8	12	5	1	3	0.4	0.4	55	0.94	25	9	N/A	5	Both Sides
IRP-48LH-HD	49	6.5	4	2.8	14.8	12	5	1	3	0.4	0.4	52	0.94	25	N/A	14	4	Left
IRP-48RH-HD	49	6.5	4	2.8	14.8	12	5	1	3	0.4	0.4	52	0.94	25	N/A	14	4	Right
RP-42EX-HD	43	6.5	4	5.8	10.5	N/A	N/A	N/A	N/A	0.4	N/A	43	0.94	N/A	N/A	N/A	4	No Curve
RP-48EX-HD	47.5	6.5	4	2.8	10.5	N/A	N/A	N/A	N/A	0.4	N/A	47.5	0.94	N/A	N/A	N/A	5	No Curve
RP-62EX-HD	62	6.5	4	4.8	10.5	N/A	N/A	N/A	N/A	0.4	N/A	62	0.94	N/A	N/A	N/A	6	No Curve

Custom sizes and lengths are available. Please consult factory.

### Space-Saving Rack Protector Equipment Specification

To ensure proper protection consider the following:

- Measure overall length of area that is to be protected.
- Measure the size of rack foot plates and clear dimensions between the foot plates.
- Is this a single or double end application? (The exposure to traffic is the key factor.)
- Placing protection equipment as close as possible and still provide an adequate barrier in front of what you're protecting to achieve proper installation.

Protection equipment is used anywhere throughout the plant and warehouse. Key areas for these types of equipment are rack and shelving ends. The cost of the protection equipment is minimal when considering what is being protected and the cost to repair or replace it if it is damaged.