



## Surface Mount Safety Bollard

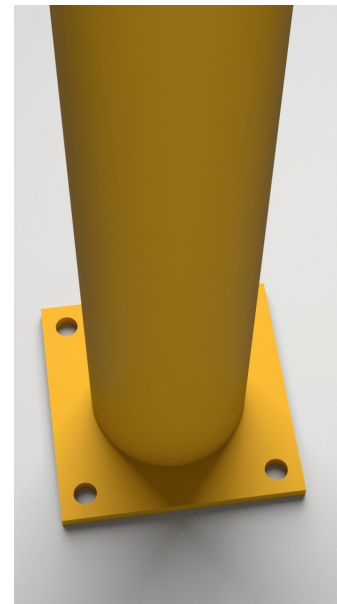
Rhino Rails Safety Bollards provide simple impact protection from vehicle traffic throughout your building. They are easily installed with floor anchors. They are powder coated high visibility yellow and constructed from steel pipe to create a physical and visual barrier.

### Features and Benefits

- All steel construction enhance durability
- Heavy duty 10" x 10" baseplate with 3/4" mounting holes
- Includes black plastic top cap
- Painted High Visibility Yellow
- Available in either 4" or 6" diameter
- Stock size is 42"
- Available for quick shipment
- Requires four 3/4" diameter anchors, sold separately

#### Areas for Install

Doorways • Building Corners • End of Racks  
Around Machines • Shipping Docks



Model No.	Diameter	Height	Anchor Sz.	Weight
RR-BO-4-42-MD	4"	42"	3/4" x 4.25"	38 lbs
RR-BO-6-42-MD	6"	42"	3/4" x 4.25"	48 lbs

4 pack anchors sold separate: 4-PK-WA3-4X4.25