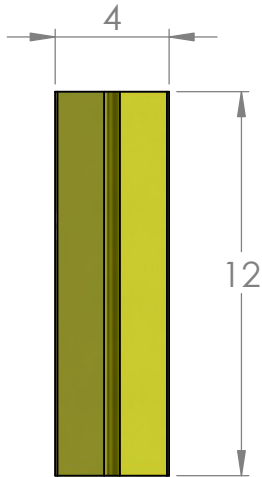
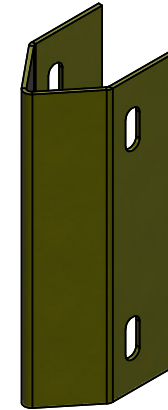
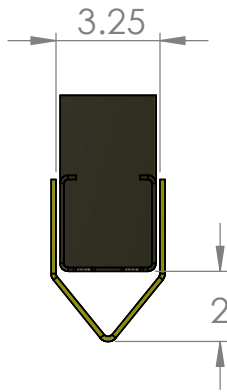
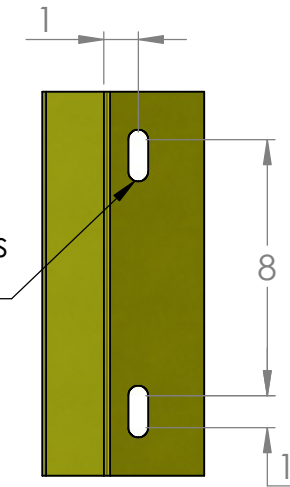


RR-BP-12 - 12" Bolt-On Post Protector



1/2-13x4"
Carriage Bolts w/ Nuts
(2)



TITLE:

12" Bolt-On
Post Protector

SIZE
A

DWG. NO.
RR-BP-12

REV
A

SCALE: NTS WEIGHT: 6.6 LBS

SHEET 1 OF 1

quotes@rhinorails.com | specs.rhinorails.com | 866-874-3385

